



MACKINA - WESTFALIA



Rebuild Electro-hydraulic winch

Product description





Introduction:

This document is intended to describe the set of machines that Mackina Westfalia has nowadays in rebuild conditions.

The equipment would be supplied completely rebuild, making a deep repair that guarantee the correct functioning without modified the main characteristics of the equipment

In the repair process all the electric components will be replaced for similar ones but with current flameproof certification, when is necessary.

The equipment will be supplied with the original certification of the manufacturer plus a reparation certification of Mackina-Westfalia.

All the characteristics indicated in this document are the ones indicated in the original user manual from the manufacturer. These characteristics could have small modifications during the repair process.



CABRESTANTE CEHZ 075/22/175

Characteristics of use:

Maximum static load 2.400 Kgr
 Service load 2.100 Kgr

Hydraulic Characteristics:

Pump flow 135 l/min
 Pump pressure 210 Kg/cm²
 Power output 64 CV

Electric Characteristics:

Motor voltage According to customer needs
 Motor speed 1.500 rpm
 Power output 75 CV
 (Option) Flameproof

Drum dimensions:

Primitive Diameter 1st layer Cable Diam. 16 816 mm
 Drum width 660 mm
 Sleeves diameter 1.050 mm
 Rolling capacity for Cable 16mm / 6 layers 600 m
 Maximum speed of the drum 37 rpm

Speed in each layer:

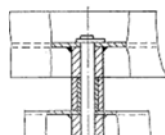
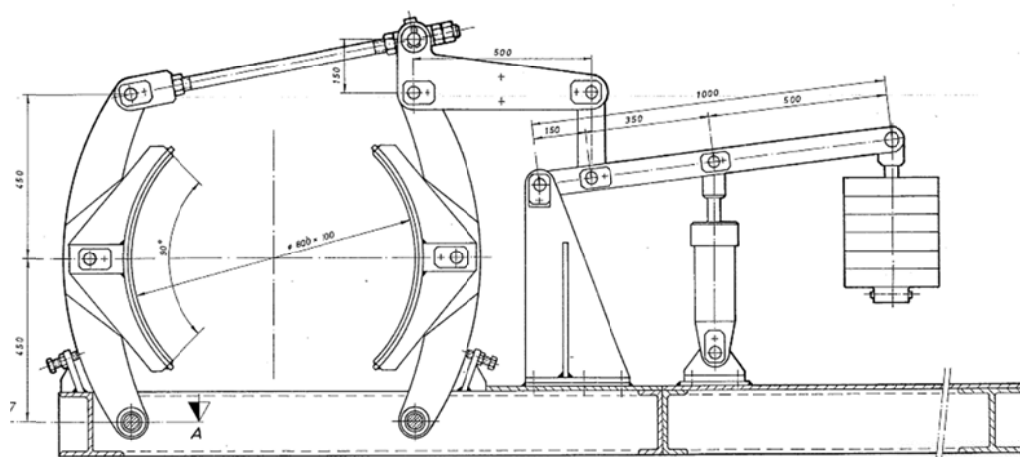
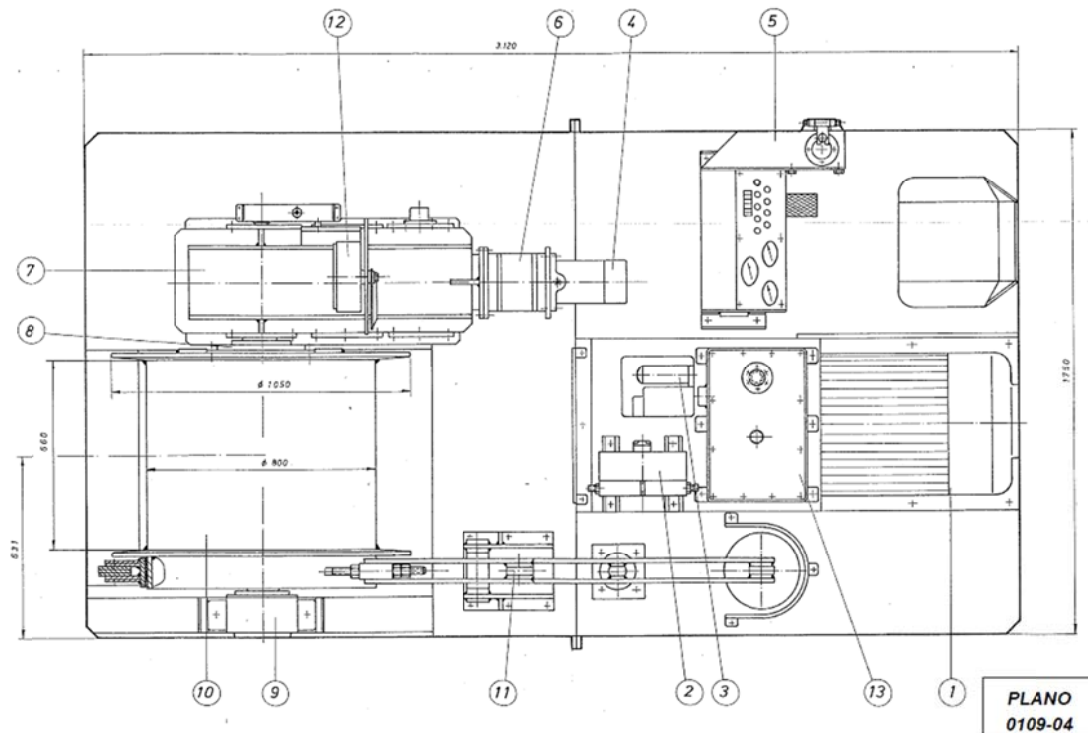
1st Layer 1.59 m/sg
 2nd Layer 1.65 m/sg
 3rd Layer 1.71 m/sg
 4th Layer 1.77 m/sg
 5th Layer 1.83 m/sg
 6th Layer 1.90 m/sg

Dimensions:

Lenght 3.120 mm
 Width 1.750 mm
 Height 1.450 mm



CABRESTANTE CEHZ 075/22/175





CABRESTANTE CEHZ 100/22/225

Characteristics of use:

Maximum static load..... 2.500 Kgr
 Service load.....2.200 Kgr

Hydraulic Characteristics:

Pump flow239 l/min
 Pump pressure 178 Kg/cm²
 Power output..... 100 CV

Electric Characteristics:

Motor voltage According to customer needs
 Motor speed..... 1.500 rpm
 Power output..... 100 CV
 (Option)..... Flameproof

Drum dimensions:

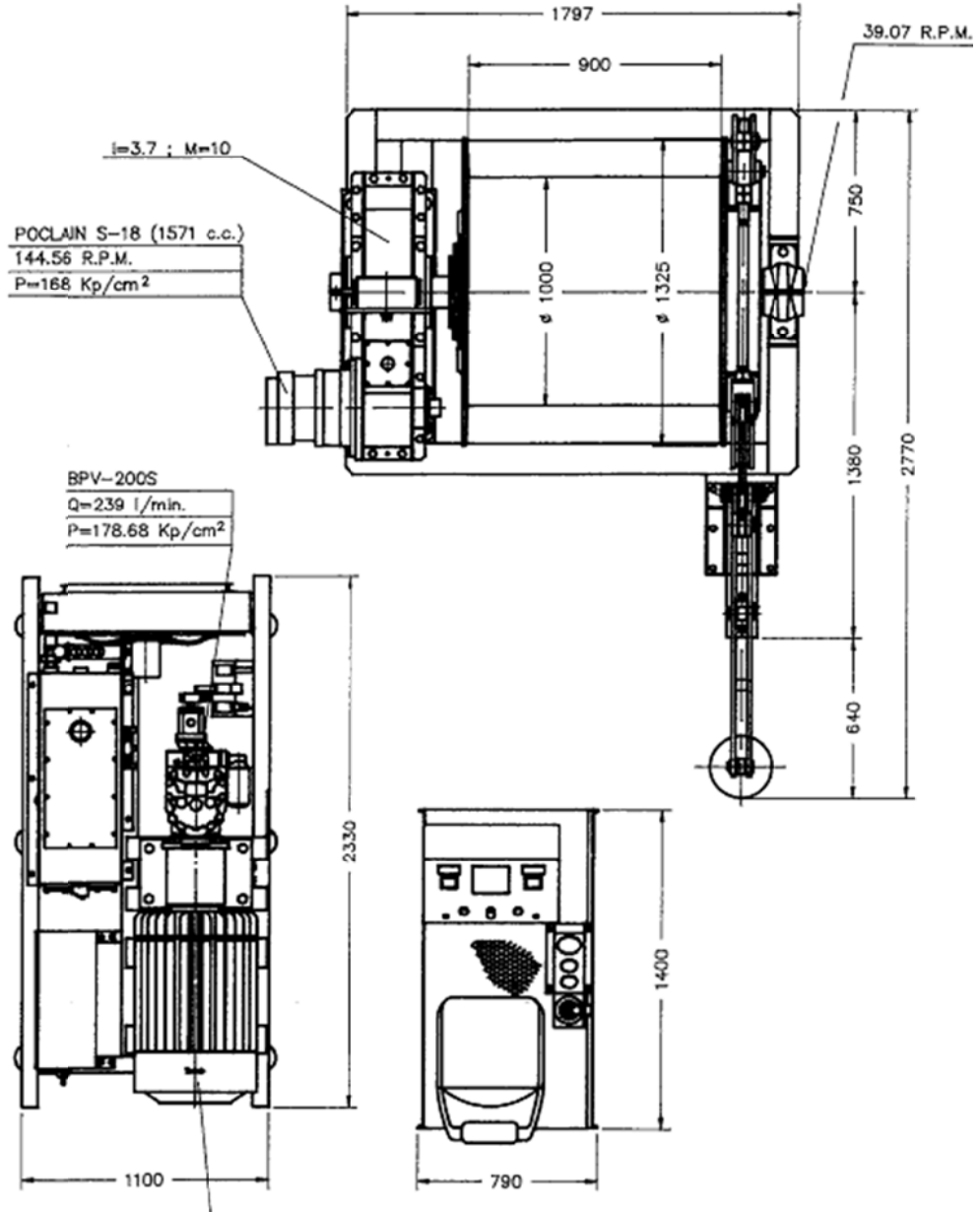
Primitive Diameter 1st layer Cable Diam. 16..... 1.016 mm
 Drum width..... 900 mm
 Sleeves diameter 1.325 mm
 Rolling capacity for Cable 16mm / 6 layers 900 m

Speed in each layer:

1st Layer 2.08 m/sg
 2nd Layer 2.14 m/sg
 3rd Layer 2.21 m/sg
 4th Layer 2.28 m/sg
 5th Layer 2.34 m/sg
 6th Layer 2.40 m/sg

Dimensions	Traction Unit	Power Unit	Unit Control
Lenght (mm)	2.270	2.300	1.400
Width (mm)	1.797	1.100	790
Height (mm)	1.520	1.100	1.235

CABRESTANTE CEHZ 100/22/225





CABRESTANTE CEHZ 125/33.5/150

Characteristics of use:

Maximum static load..... 3.450 Kgr

Service load.....3.350 Kgr

Hydraulic Characteristics:

Pump flow210 l/min

Pump pressure220 Kg/cm²

Power output..... 95 CV

Electric Characteristics:

Motor voltage 440 V 60 Hz

Motor speed..... 1.800 rpm

Power output..... 125 CV

(Option) Flameproof

Dimensiones Tambor:

Primitive Diameter 1st layer Cable Diam. 22..... 1.022 mm

Drum width..... 1.110 mm

Sleeves diameter 1.350 mm

Rolling capacity for Cable Cable 22mm / 4 layers..... 600 m

Speed in each layer:

1st Layer 1.41 m/sg

2nd Layer 1.47 m/sg

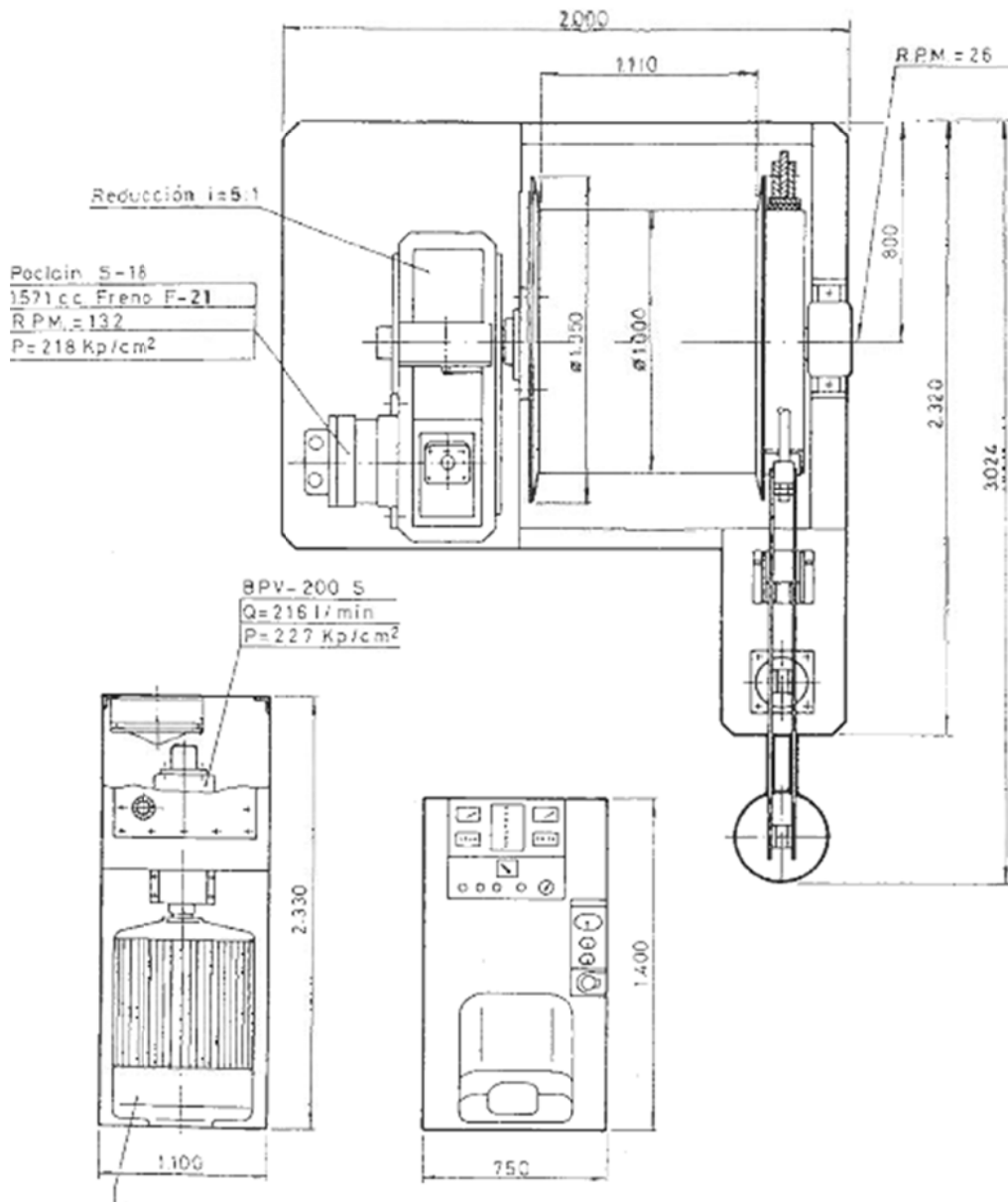
3rd Layer 1.53 m/sg

4th Layer 1.59 m/sg

Dimensions	Traction Unit	Power Unit	Unit Control
Lenght (mm)	3.020	2.330	1.400
Width (mm)	2.000	960	800
Height (mm)	1.595	1.100	1.200



CABRESTANTE CEHZ 125/33.5/150





CABRESTANTE CEHZ 150/40/170 CABRESTANTE CEHZ 300/40/340 (DOBLE ACCIONAMIENTO)

Characteristics of use:

Maximum static load 4.200 Kgr

Service load4.000 Kgr

Hydraulic Characteristics:

Pump flow 300 l/min

Pump pressure 230 Kg/cm²

Power output..... 130 CV

Electric Characteristics:

Motor voltage According to customer needs

Motor speed 1.485 rpm

Power output..... 150 CV

(Option) Flameproof

Drum dimensions:

Primitive Diameter 1st layer Cable Diam. 22..... 1.572 mm

Drum width..... 1.450 mm

Sleeves diameter 1.700 mm

Rolling capacity for Cable 22mm / 2 layers 550 m

Speed in each layer (with 1 drive):

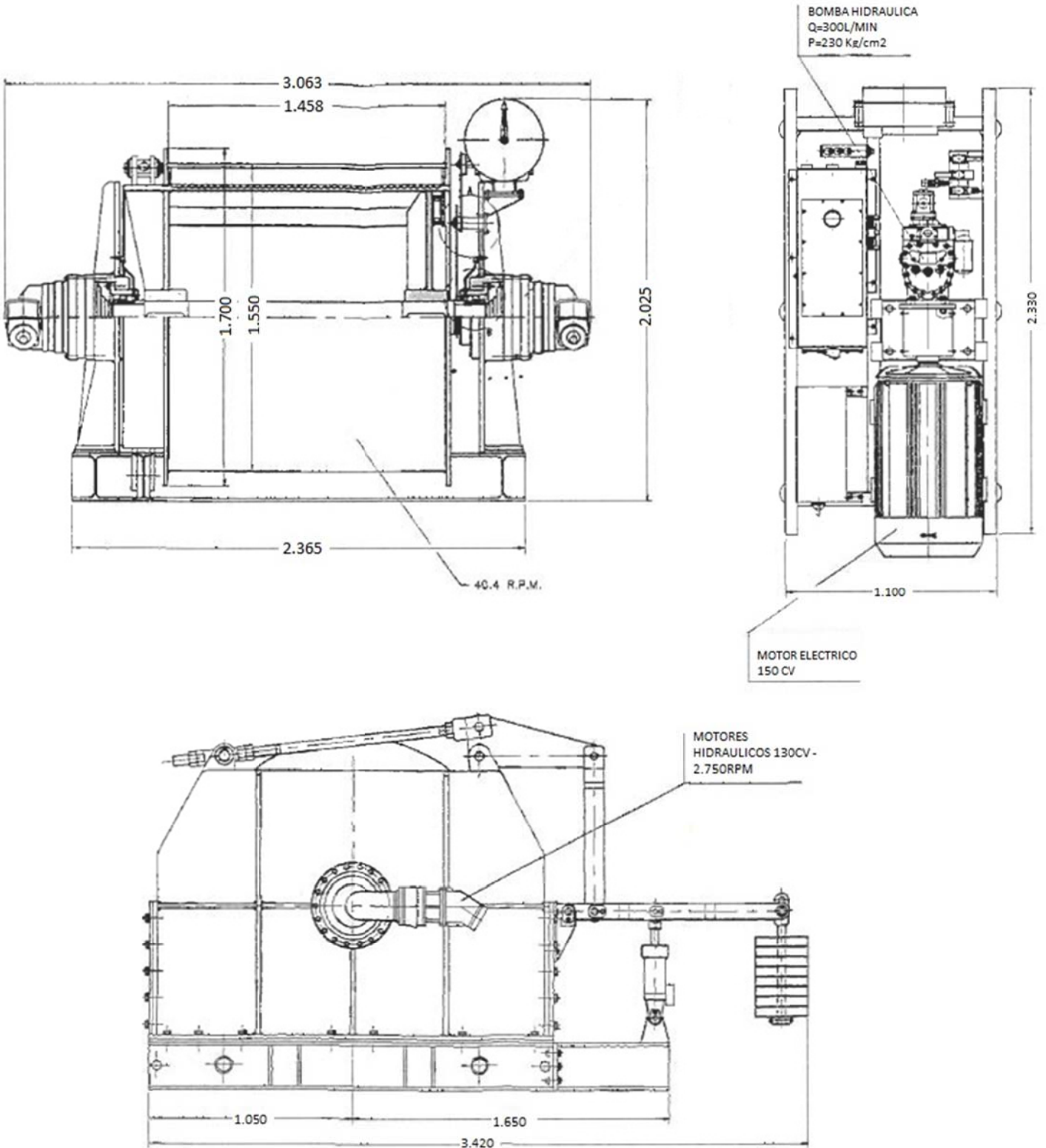
1st Layer 1,66 m/sg

2nd Layer 1,70 m/sg

Dimensions	Traction Unit	Power Unit	Unit Control
Lenght (mm)	3.420	2.330	1.400
Width (mm)	3.063	1.100	790
Height (mm)	2.025	1.100	1.235



CABRESTANTE CEHZ 150/40/170





CABRESTANTE CEHZ 180/38/225

Characteristics of use

Maximum static load (daN) 4.000
 Service load (daN) 3.800

Hydraulic Characteristics

Pump flow (l/min) 320
 Pump pressure (bar) 180
 Power output (kW/CV) 112 / 152

Electric Characteristics

Motor voltage According to customer needs
 Motor speed 1500
 Power output (Kw/CV) 132 / 180

Drum dimensions:

Diameter (mm) 1.475
 Primitive Diameter 1st layer Cable Diam. 24 (mm) 1.499
 Sleeves diameter (mm) 1.960
 Drum width (mm) 1.345
 Rolling capacity for Cable 30mm / 4 layers (m) 800

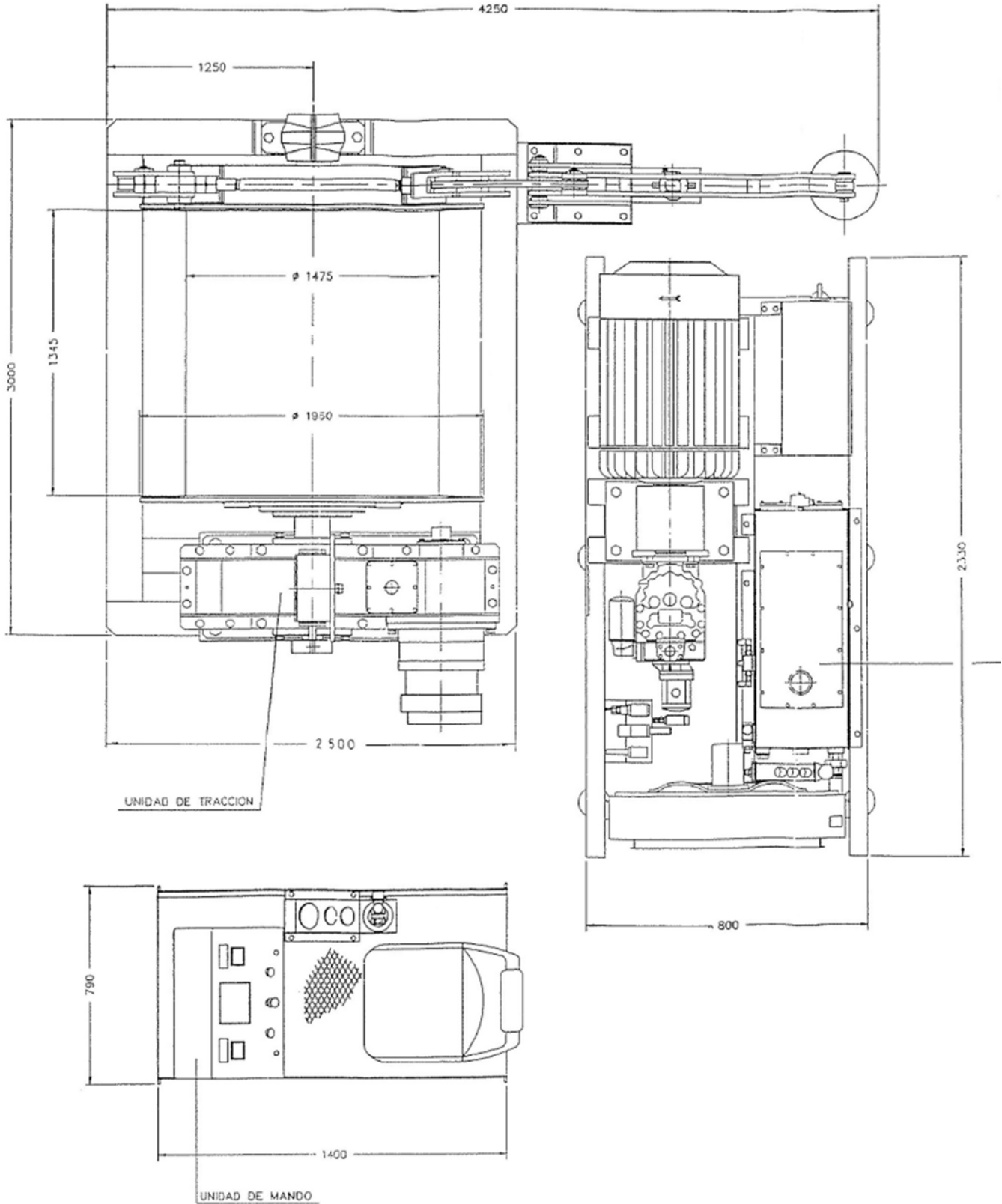
Speed in each layer (m/s)

1st Layer 2.35
 2nd Layer 2.45
 3rd Layer 2.54
 4th Layer 2.63

Dimensions	Traction Unit	Power Unit	Unit Control
Lenght (mm)	4.250	2.330	1.400
Width (mm)	3.000	800	790
Height (mm)	2.190	1.320	1.100



CABRESTANTE CEHZ 180/38/225





CABRESTANTE CEHZ 180/48/175 CABRESTANTE CEHZ 360/48/350 (DOBLE ACCIONAMIENTO)

Characteristics of use:

Maximum static load (daN) 5.000
Service load (daN) 4.800

Hydraulic Characteristics

Pump flow (l/min) 300
Pump pressure (bar) 230
Power output (kW/CV) 112 / 150

Electric Characteristics

Motor voltage According to customer needs
Motor speed 1500
Power output (Kw/CV) 132 / 180

Drum dimensions

Diameter (mm) 1.450
Primitive Diameter 1st layer Cable Diam. 26 (mm) 1.326
Sleeves diameter (mm) 1.700
Drum width (mm) 1.450
Rolling capacity for Cable 26mm / 2 layers (m) 625

Speed in each layer (with 1 drive):

1st Layer 1.63
2nd Layer 1.71
3rd Layer 1.79
4th Layer 1.87

Dimensions	Traction Unit	Power Unit	Unit Control
Lenght (mm)	3.485	2.330	1.400
Width (mm)	2.950	1.100	790
Height (mm)	1.850	1.100	1.235



CABRESTANTE CEHZ 360/48/350 (DOBLE ACCIONAMIENTO)

