



MACKINA - WESTFALIA

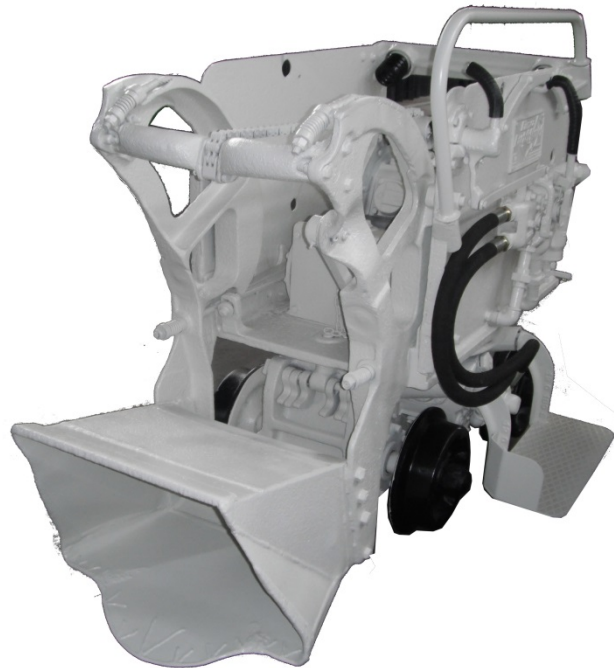


Product description

## Rebuild pneumatic loader EIMCO 12B

---

---

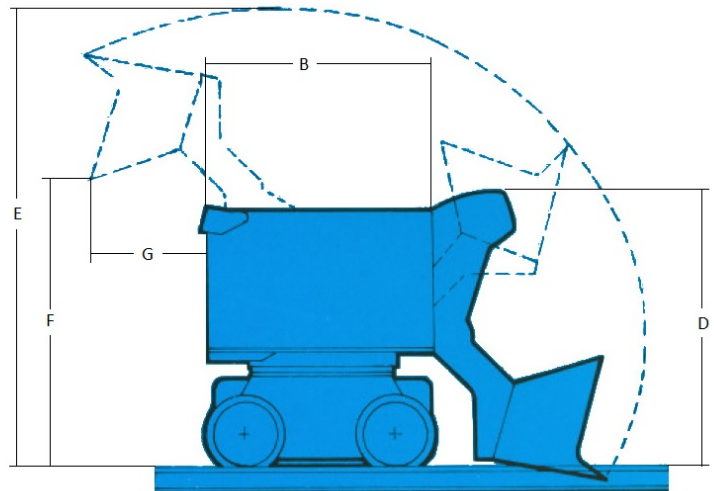
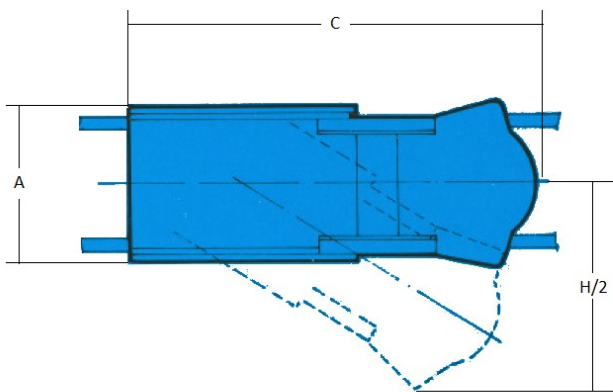




## EIMCO 12 B

### CHARACTERISTICS

- ✓ 0.5 to 1 m<sup>3</sup> load capacity per minute.
- ✓ For small section galleries.
- ✓ Standard track gauge 600mm.
- ✓ Maximum track gauge 915mm.
- ✓ Automatic gravity centering.
- ✓ Two independent pneumatic engines of 5 cylinders of radial piston of 12cv.
- ✓ Width adjusters of load.
- ✓ Steel platform for operator's foot with protective cap.
- ✓ Safety bar of the turning hose.
- ✓ Wheels with high flanges.
- ✓ Security controls.
- ✓ Bucket for heavy loads with bottom plate of manganese steel.
- ✓ Unique pull chain for the bucket
- ✓ Big bearing and heavy axle.
- ✓ Centralized lubrication
- ✓ Safety valve.





Dim.	Especificación	Unidades	EIMCO 12B
A	Overall frame width	mm	710
	Overall width with platform standing	mm	1.060
B	Overall length frame	mm	1.060
C	Overall length with the bucket in down position	mm	1.850 - 1.980
D	Overall width including the bucket	mm	1.250 - 1.295
E	Maximum height of bucket	mm	2.000 - 2.110
F	Discharge height	mm	1.305 - 1.500
G	Discharge distance behind loader	mm	405 - 610
H	Lateral reach	mm	1.900 - 2.110
	Lateral reach excavation	mm	2.515 - 2.720
	Working pressure	Kg/cm <sup>2</sup>	4 - 7
	Air hose diameter	mm	25 - 30
	Full circle of loading	sg	6
	Bucket capacity	m <sup>3</sup>	0,13 - 0,17
	Loading capacity	m <sup>3</sup> /min	0,5 - 1,0
	Total weight of loader.	Kg	1.905
	Heaviest piece weight	Kg	355
	Air Consumption	m <sup>3</sup> /min	6 - 7
	Track gauge	mm	600 - 915





# MACKINA-WESTFALIA, S.A.

Carretera M-300 Km.29,5 28802 Alcalá de Henares MADRID ESPAÑA  
Tel. + 34 91 889 44 12 Fax. + 34 91 883 21 74  
Email. [mackwest@mackina-westfalia.com](mailto:mackwest@mackina-westfalia.com)  
Web [www.mackina-westfalia.com](http://www.mackina-westfalia.com)

