

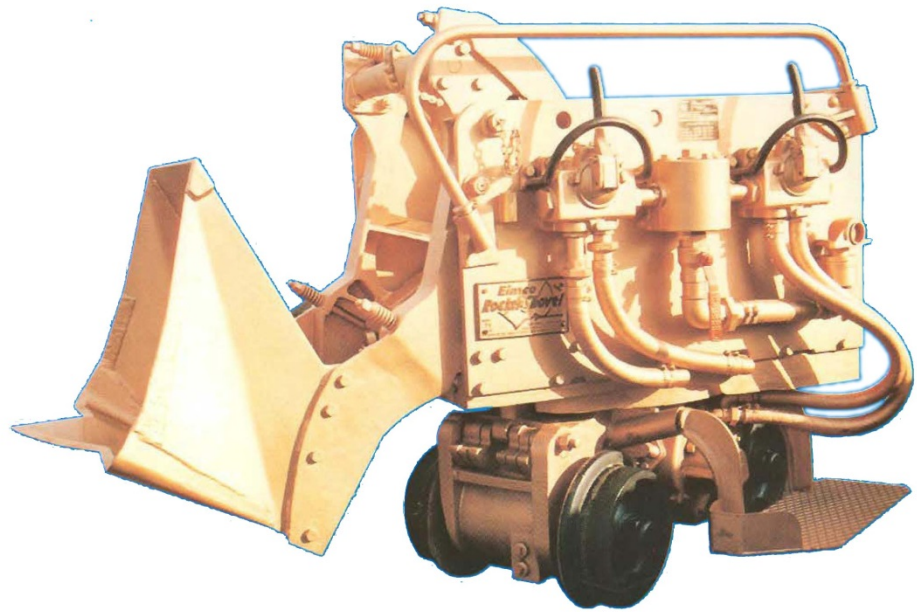


MACKINA - WESTFALIA



Product description

Rebuild pneumatic loader EIMCO 21

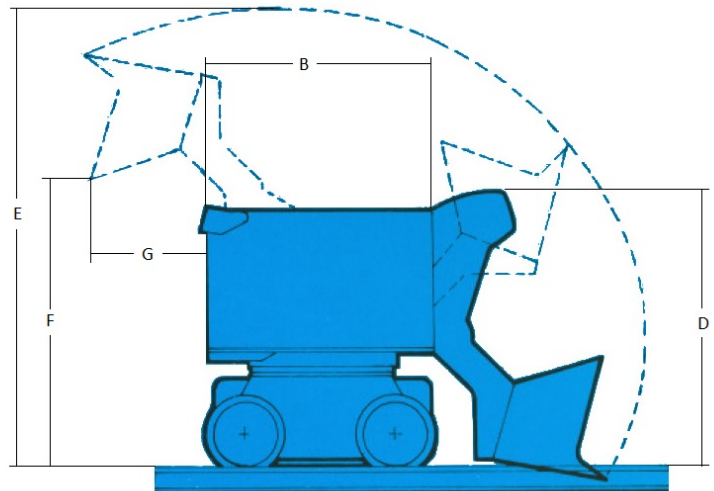
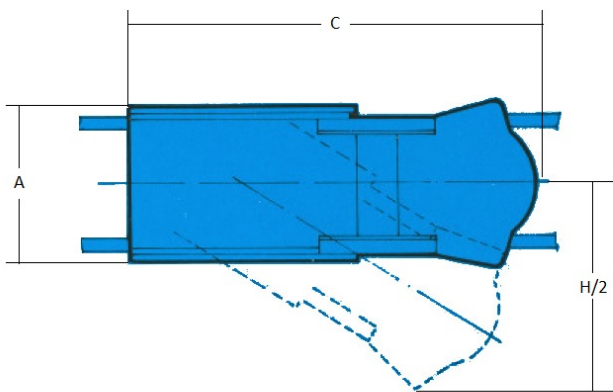




EIMCO 21

CHARACTERISTICS

- ✓ 1,05 to 1,5 m³ load capacity per minute.
- ✓ For medium section galleries.
- ✓ Standard track gauge 600mm.
- ✓ Maximum track gauge 1200mm.
- ✓ Automatic gravity centering.
- ✓ Two independent pneumatic engines of 5 cylinders of radial piston of 22cv.
- ✓ Width adjusters of load.
- ✓ Steel platform for operator's foot with protective cap.
- ✓ Safety bar of the turning hose.
- ✓ Wheels with high flanges.
- ✓ Security controls.
- ✓ Bucket for heavy loads with bottom plate of manganese steel.
- ✓ Unique pull chain for the bucket
- ✓ Big bearing and heavy axle.
- ✓ Centralized lubrication
- ✓ Safety valve.





Dim.	Especificación	Unidades	EIMCO 21
A	Overall frame width	mm	860
	Overall width with platform standing	mm	1.240
B	Overall length frame	mm	1.270
C	Overall length with the bucket in down position	mm	2.100 - 2.290
D	Overall width including the bucket	mm	1.435 – 1.550
E	Maximum height of bucket	mm	2.270 – 2.510
F	Discharge height	mm	1.340 – 1.730
G	Discharge distance behind loader	mm	440 - 700
H	Lateral reach	mm	2.300 – 2.490
	Lateral reach excavation	mm	2.490 – 2.900
	Working pressure	Kg/cm ²	4 - 7
	Air hose diameter	mm	30 - 40
	Full circle of loading	sg	7
	Bucket capacity	m ³	0,3
	Loading capacity	m ³ /min	1,0 – 1,5
	Total weight of loader.	Kg	3.240
	Heaviest piece weight	Kg	554
	Air Consumption	m ³ /min	8 - 9
	Track gauge	mm	600 – 1.219



MACKINA-WESTFALIA, S.A.

Carretera M-300 Km.29,5 28802 Alcalá de Henares MADRID ESPAÑA
Tel. + 34 91 889 44 12 Fax. + 34 91 883 21 74
Email. mackwest@mackina-westfalia.com
Web www.mackina-westfalia.com

