



MACKINA - WESTFALIA



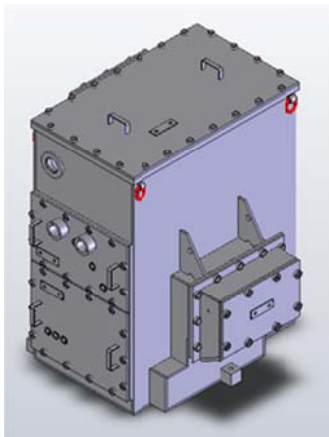
Product description

HIGH-VOLTAGE FLAMEPROOF CELL FPA 200

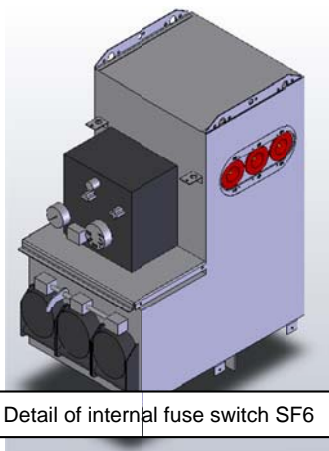


CHARACTERISTICS

The Ex d I certified explosion-proof FPA200 enclosure is made of steel and is ready to be coupled to Promining transformers or to be mounted on a skid with a high voltage output box. Inside it contains a fuse switch with SF6 contacts.



Wrap-around detail



Detail of internal fuse switch SF6

CHARACTERISTICS	
Rated voltage kV	7.2
Rated busbar intensity (A)	400/630
Assigned drift intensity (A)	200
Short-term intensity of higher busbar (kA)	16/20
Insulation level: industrial frequency (1 min)	
Grounded and between phases (kV)	28
At sectioning distance (kV)	32
Insulation level: Lightning impulse	
Grounded and between phases (kV)	75
At sectioning distance (kV)	85
Closure capacity (kA)	2,5
Cutting capacity	
Active current (A)	400/630
Capacitive current (A)	31,5
Inductive current (A)	16
Breaking capacity of the switch and fuse combination (kA)	20
Current transfer (UNE-EN 60420) (A)	1.500



Complete 500kVA transformation group coupled with AT FPA200 cell and BT PBR20 cell



THE FUSE SWITCH

The stainless steel tank contains the isolator switch, the busbar and the fuse holders. The SF₆ gas is inside at an absolute pressure of 1.3 bar.

The sealing of the tank allows the maintenance of safe operation requirements throughout the life of the switchgear without the need for gas replacement. A pressure gauge visible from the outside of the cell can be used to check the pressure inside the cell.

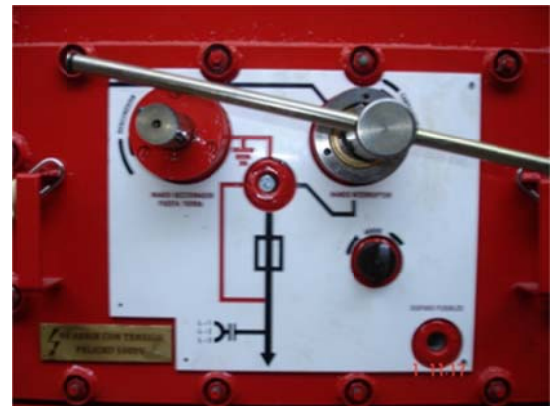
The busbar included in the tank is designed to withstand not only the rated current but also the thermal and dynamic currents.

EARTHING SWITCH

The switch has three positions:

- Connected
- Sectioned
- Grounded

This switch is operated by means of a lever on two different axes, one for the switch (switches between the connected and disconnected switch positions) and the other for the earthing switch of the feeder cables (switches between the disconnected and earthing positions).



Detail of FPA200 cell isolator control

These elements are independently operated, so that their actuation speed does not depend on the speed of the operator.

The current is cut when the switch is switched from connected to disconnected, using the speed of the blades and the blowing of the SF₆ gas.

FUSES

The cell has 3 fuses with a trigger that are mounted on carriages that are inserted in the insulating resin fuse tubes.

The 3 tubes, immersed in SF₆, are perfectly watertight with respect to the gas and when closed, they are also watertight with respect to the outside, guaranteeing insensitivity to external pollution and flooding.

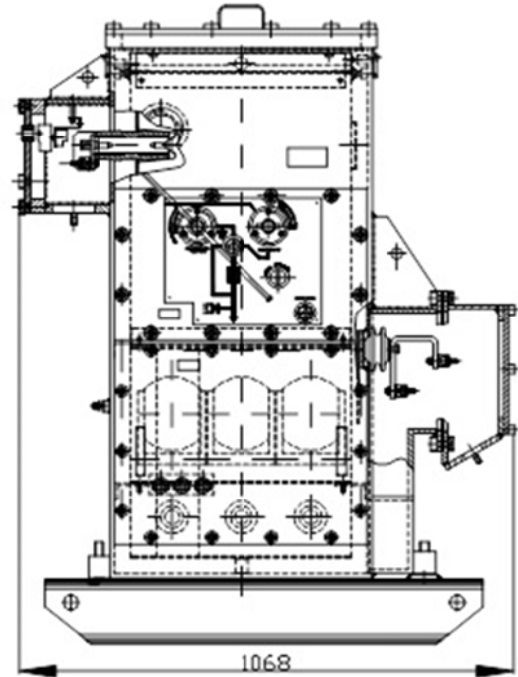
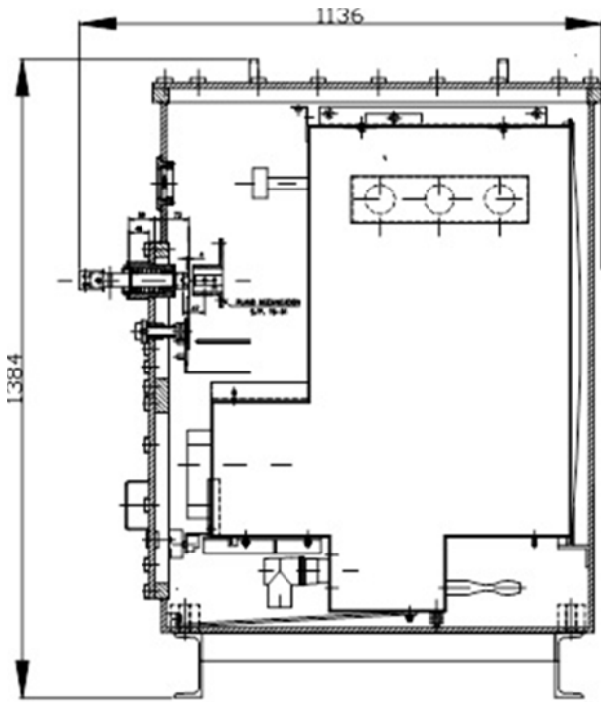


Detail of fuse holder inside the cell



HIGHT-VOLTAGE FLAMEPROOF CELL FPA200

DIMENSIONS AND WEIGHTS



Approximate weight: 800kg