

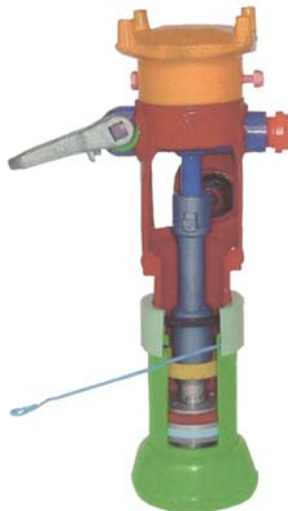


MACKINA - WESTFALIA



Product Description

Individual Pump-type Mine Prop MWM 20t





INTRODUCTION:

Hydraulic Mine Props MWM 20t fitted with closed circuit hydraulic system are generally used as a roof support up to the front wall and also as a support in coal seams with small slopes between 0,60 to 2m thicks.

The hydraulic props are supplied with a nominal strength of 200 kN.

The use of MWM 20t mine Prop is effective along with mechanic articulated frames when the work has narrow seams as well as hydraulic support mine prop of constant resistance.



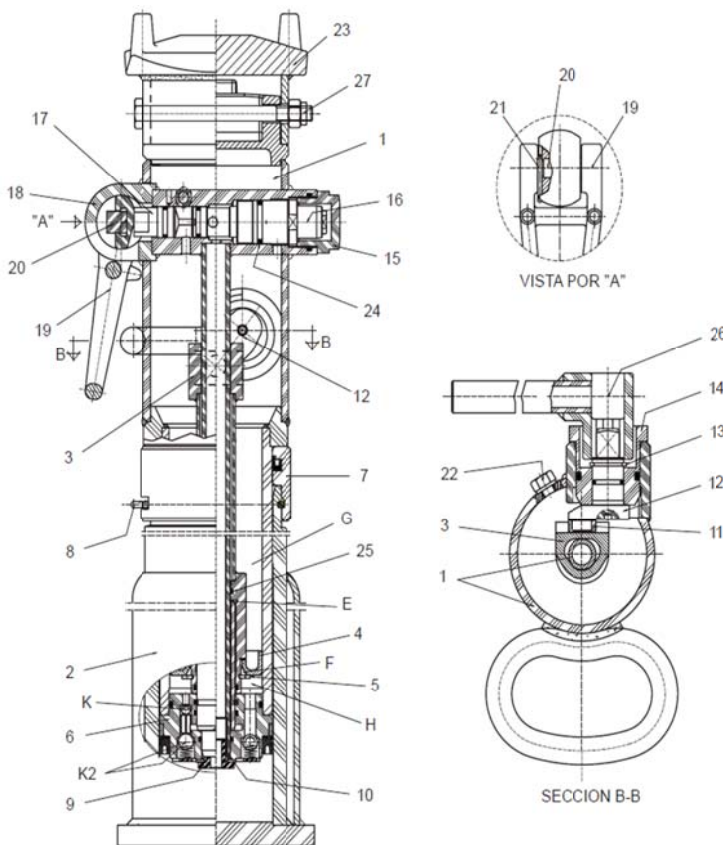
The main parameters of MWM20t mine props are described in the following chart:

TYPE	CONTRACTED HEIGHT (mm)	EXTENDED HEIGHT (mm)	HYDRAULIC STROKE (mm)	WEIGHT (Kg)
Nº 03	417	537	120	21,2
Nº 04	535	685	150	27,7
Nº 06	670	940	270	33,4
Nº 08	830	1150	320	39,2
Nº 10	1036	1436	400	45,9
Nº 11	1145	1665	520	52
Nº 12	1200	1770	560	55,4
Nº 13	1325	1925	600	58,7

FEATURES:

Main features of hydraulic mine props MWM20t are shown in the attached chart:

Hydraulic Mine Props MWM20t	
Nominal Work resistance	200 kN
Work Pressure in cylinder	40 Mpa
Setting Load	60 kN mín
Applied Force on the pushing pump lever	0,40 kN máx
Force during the discharge of the mine prop at distance	0,80 kN máx
Force during the discharge of the mine prop with pumping lever	0,15 kN máx
Elevation of the extendable part in a pump cycle	
During the free extension	22 mm mín
During the pushing	2 - 2,4 mm
Specific pressure on the ground	15 Mpa máx
Working fluid:	Fluido Hidráulico antidesgaste DIN51524 Parte 2 Clase HLP ISO VG 46



Main elements:

1. Piston Rod
2. Sleeve
3. Pump Piston
4. Ball cock
5. Safety ring
6. Piston
7. Joint Case
8. Lock
9. Fix screw
10. Elastic washer B16
11. Block
12. Crank
13. Safety ring E-22
14. Case
15. Plug
16. Safety Valve
17. Push Rod
18. Excentric
19. U-shape lever
20. Finger
21. Clamp
22. Hexagonal Screw
23. Head
24. Seal kit N° 1
25. Seal kit N° 2
26. Lever
27. Bolt and nut M10



MACKINA-WESTFALIA, S.A.

Avda. Madrid 70 28802 Alcalá de Henares MADRID ESPAÑA
Tel. + 34 91 889 44 12 Fax. + 34 91 883 21 74
Email. mackwest@mackina-westfalia.com
Web www.mackina-westfalia.com

