

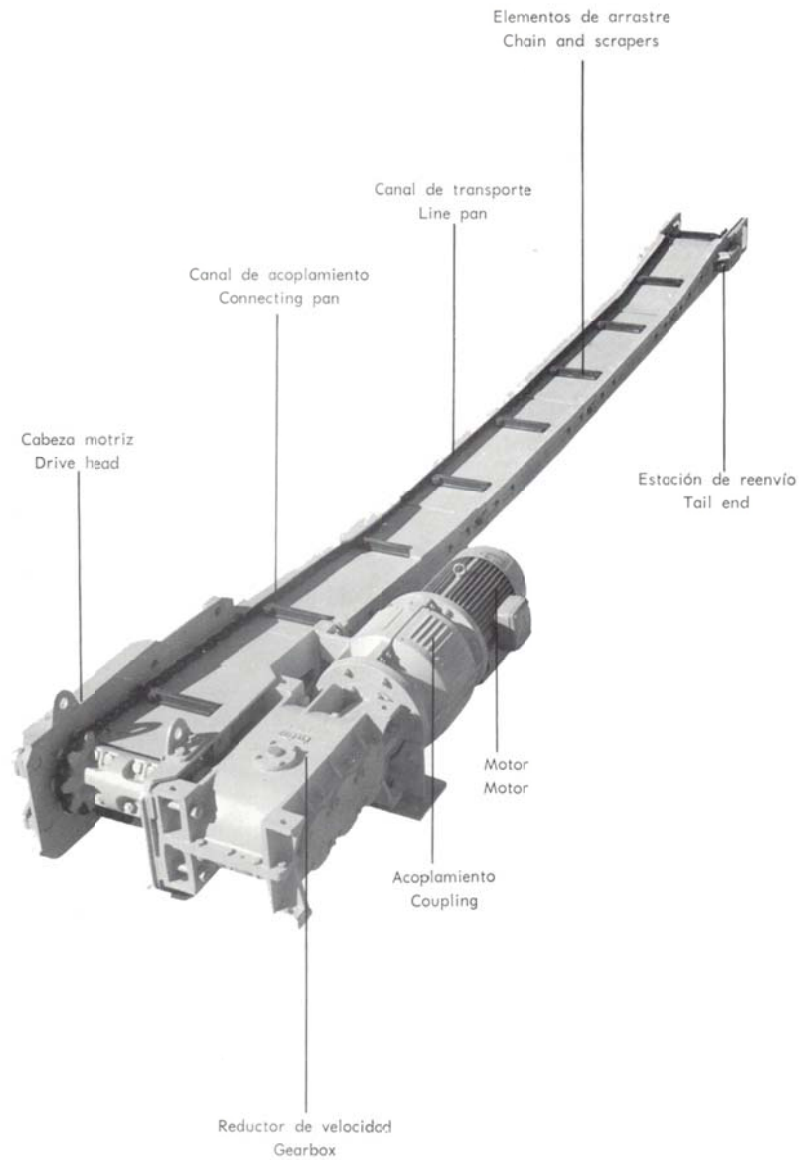


MACKINA - WESTFALIA



DOUBLE SIDE CHAIN CONVEYOR T-300

Product description





INDEX

1.	INTRODUCTION	2
2.	COMPONENTS	2
2.1.	Driving head.....	2
2.1.1.	Gearbox	4
2.2.	Connection pan.....	5
2.3.	Pan.....	6
2.4.	Forwarding station	7
2.5.	Enhancement plate.....	8
2.6.	Chain.....	9



1. INTRODUCTION

The T-300 model, the smallest in the range, is designed especially for low-powered mining operations, as well as for auxiliary work in high-production mines.

Its dimensional characteristics allow an easy handling of all its elements.

Maximum length	100m
Capacity	35 t/h
Installed Power	11 kW
Chain Type	10 x 35

2. COMPONENTS

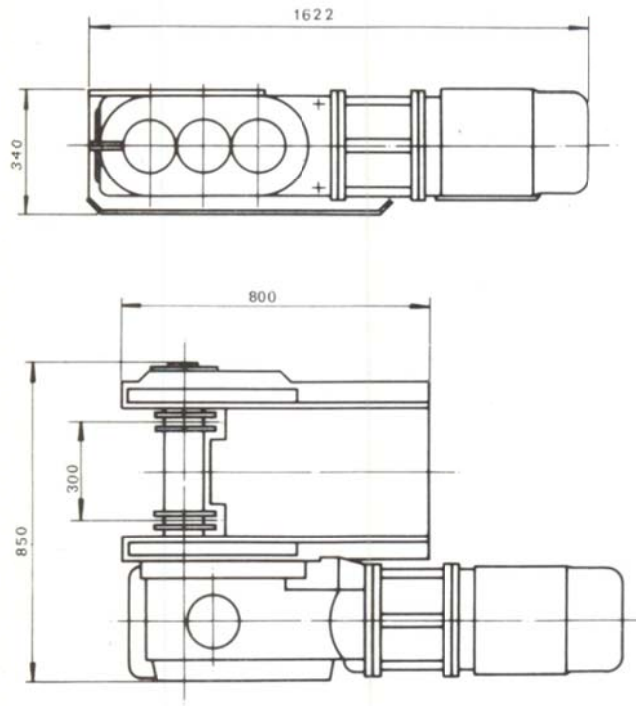
2.1. Driving head

Composed by:

- Chassis: Solidly built steel frame with seats on both sides to mount the drive units indistinctly.
- A driving drum, in two screwed halves, where the manganese steel stars are integrated.
- A 65mm diameter false shaft, mounted on a pendulum bearing, located on the opposite side of the gearbox.
- Two anti-hitching chain pads.
- Gearbox: angular input and three gear trains, the first being bevel and the two remaining cylindrical with helical teeth.
- Coupling: integrated inside a steel housing that serves as a link between the gearbox and the motor.
- Electric motor B-5, 11 kW.

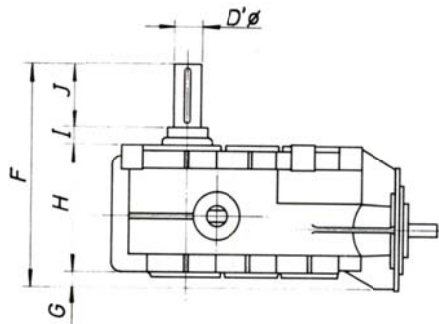
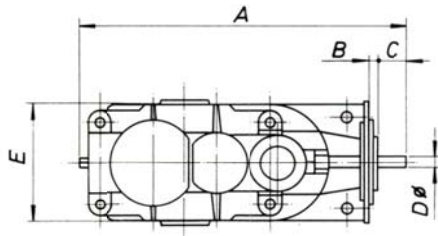


Dimensions



DESCRIPTION	REFERENCE	Power Kw	Weight Kg
MOTOR HEAD	01TM000 003 430 300		
Chassis	01TM000 003 430 301		153
Driving drum	01TM000 302 500 100		27
False axis	01TM000 302 000 600		23
Anti-locking pads	01TM000 000 141 604		
DRIVELINE	01TM000 102 012 500		
Gearbox	01TM000 003 328 492	11	200
Elastic Coupling	M-5		38
Hydraulic Coupler	NO		
Electric motor 11 kW	Depending on voltage	11	161

2.1.1. Gearbox



CONVEYOR	GEARBOX	A	B	C	D	D'	E	F	G	H	I	J	Peso Kg
T-300	01TM000003328492	802	32	70	35	69	320	550	53,5	301	40	155	200

The reduction is achieved by means of three gear trains. A helical bevel group and two helical cylindrical trains with lapped and ground tooth profiles respectively.

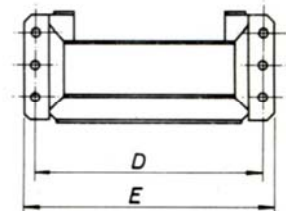
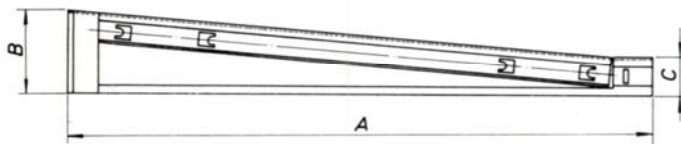
The casing, which is of the bipartite type, is symmetrical with respect to a horizontal median plane, built in cast steel and totally watertight. A hermetic seal is achieved on the input and output shafts by means of labyrinths and grease seals. The lubrication is done by immersion and splash in oil bath.

The efficiency of these gearbox is 92%. They can be mounted on either side of the corresponding drive head



2.2. Connection pan

It performs the coupling between the normal channels and the drive head. Manufactured with sigma profile and special treated steel bottom.



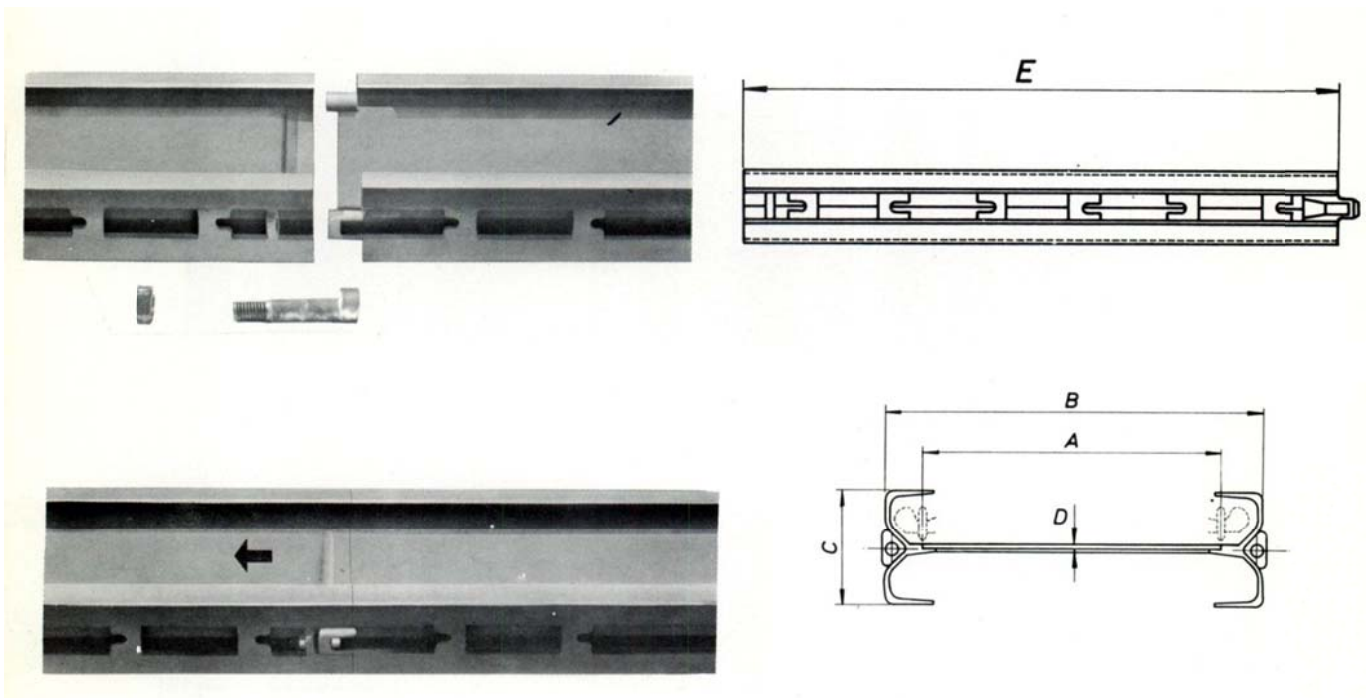
CONVEYOR	REFERENCE	A	B	C	D	E	Peso
				mm			Kg
T-300	01TM000003430100	1.495	208	105	440	480	73



2.3. Pan

They are made of steel treated to avoid wear. Manufactured with special sigma profile and bottom plate with stamped overlap. The screws to join the channels are included. The union between channels is made as shown in the figure.

The standard length is 1.500mm.

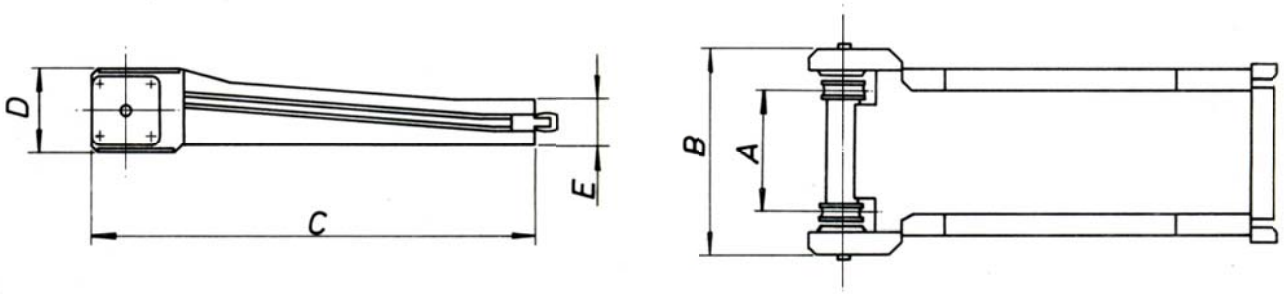


CONVEYOR	REFERENCE	A	B	C	D	E	Peso
T-300	01TM000003419000	300	365	105	4	1500	53



2.4. Forwarding station

Built in sigma profile, they form a solid set, very resistant to collapses. Normally the drum is star-shaped to avoid blocking by accumulation of fines, although it can also be grooved. The bearings on which the drum is mounted are amply dimensioned and their housing is watertight..

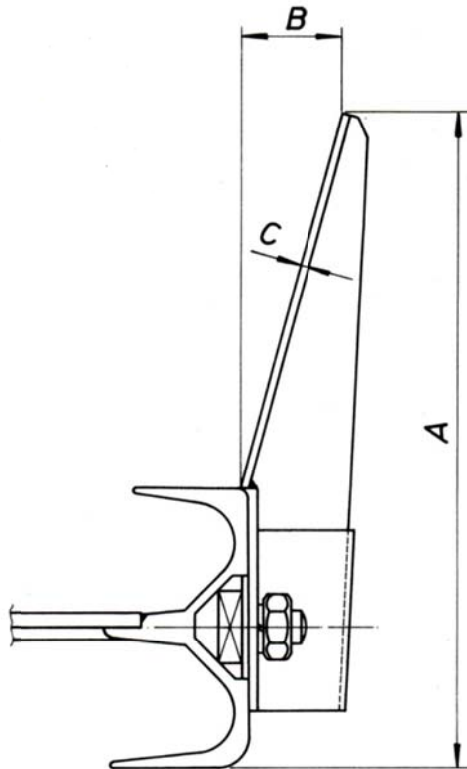


CONVEYOR	REFERENCE	A	B	D	E	Peso Kg
T-300	01TM000003487000	300	450	200	105	70



2.5. Enhancement plate

Designed to increase the section of the canal by facilitating loading and increasing transport capacity.

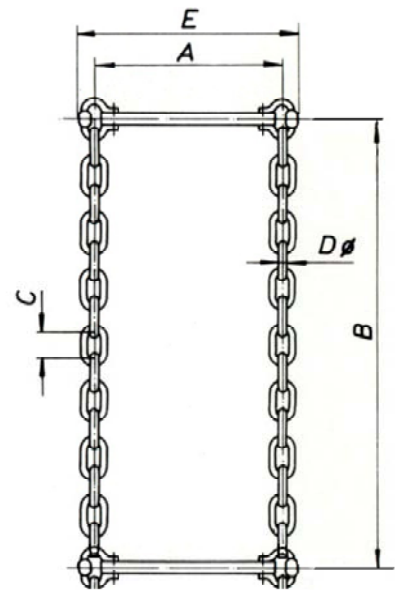


CONVEYOR	REFERENCE	A	B mm	C	Peso Kg
T-300	01TM000003661300	250	40	5	11

2.6. Chain

The chain is made of special steel according to DIN 22252. The squeegees and connecting links are made of stamped steel, and the screws are made of treated special steel. The connecting links, bolts and chain are designed for the same breaking load

It is supplied as standard with 5.6m. long chain assembled, composed of its corresponding 15-link chain sections, scraper bars and false links



CONVEYOR	A mm	B mm	C mm	D mm	E mm	Carga de Rotura Tm	Peso Kg	Description	Reference
T-300	300	560	35	10	344	10	3,7	5.6m long assembled chain section	01MW200432000
								Chain Section 10x35 15E	0495002010035
								DIN 22.252 -2	
								Scraper bar	01MW200430000
								False link	01MW200429000
								Screw 12x45	0401200120050



MACKINA-WESTFALIA, S.A.

Carretera M-300 Km.29,5 28802 Alcalá de Henares MADRID ESPAÑA
Tel. + 34 91 889 44 12 Fax. + 34 91 883 21 74
Email. mackwest@mackina-westfalia.com
Web www.mackina-westfalia.com

