

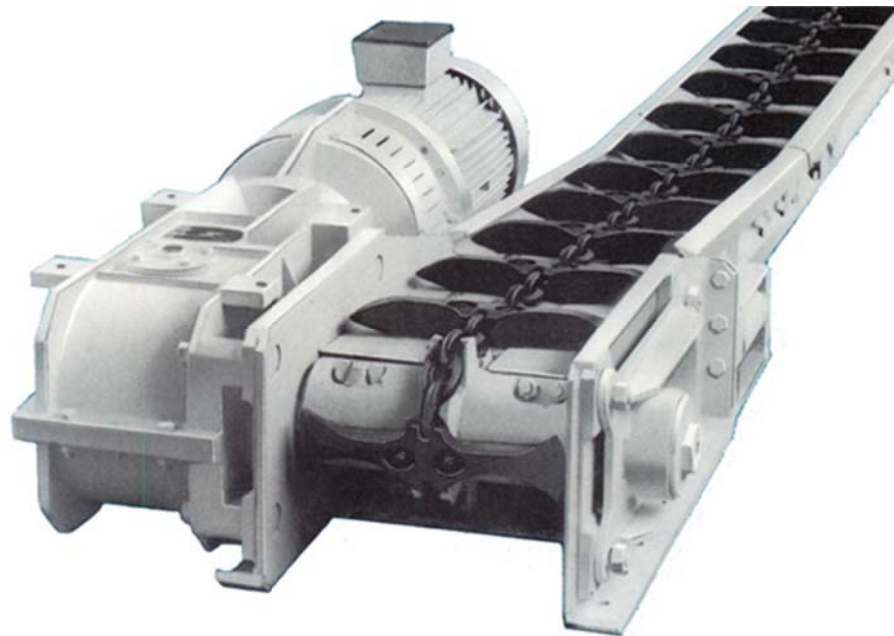


MACKINA - WESTFALIA



CENTRAL CHAIN CONVEYOR EKF-0

Product description





INDEX

INTRODUCTION	2
COMPONENTS	3
Driving head	3
Gearbox.....	5
Connection pan	6
Pans	7
Forwarding station.....	8
Chain	9



INTRODUCTION

The EKF-0 Armored Conveyor is a medium type model used both as a face conveyor or as a delivery conveyor.

There are 3 versions of this conveyor with the same profile:

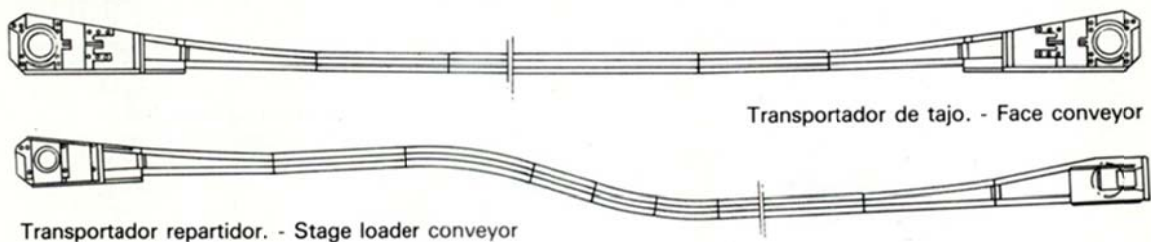
MODEL	OUTSIDE WIDTH	CHAIN	CAPACITY
EKF-0/444/18	444	18 x 64	100 T/h
EKF-0/444/22	444	22 x 86	130 T/h
EKF-0/622/22	622	22 x 86	300 T/h

This document reflects the main characteristics of the conveyor EKF-0/444/18

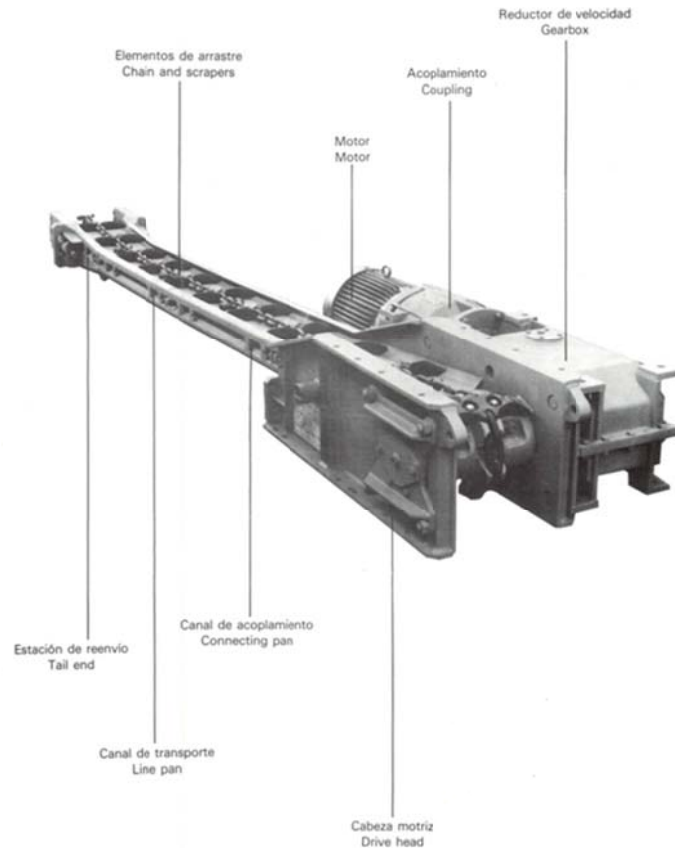
Its dimensional characteristics allow an easy handling of all its elements.

- Maximum length..... 120m
- Capacity 100 t/h
- Installed Power 2x22/1X45 kW
- Central Chain Type..... 18 x 64
- Transport speed Z=8; 50Hz..... 0,63m/s

The EKF-0 conveyor combines the advantages of the chain arrangement in the neutral transport line, reducing the possibility of blockage. It allows a variable separation between the scraper bars, according to the conditions required by the transport, and its adaptation to the curves is achieved, between 11° and 22°, keeping the scraper bars in a normal position without overloading.



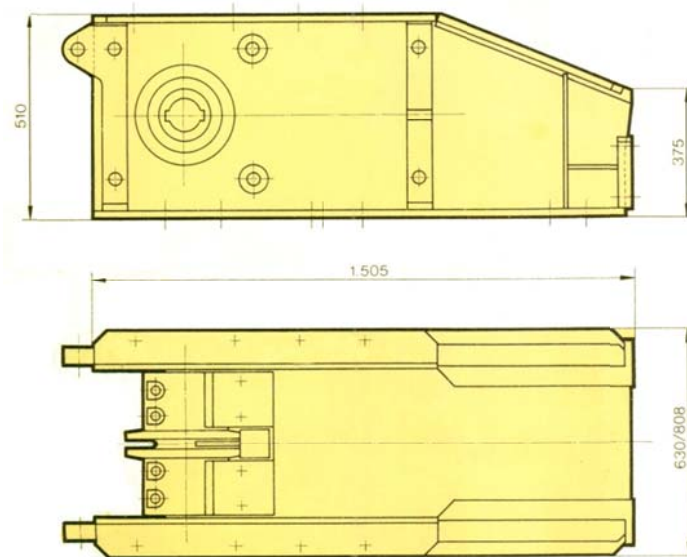
COMPONENTS



Driving head

Composed by:

- Chassis: Solidly built steel frame with seats on both sides to mount the drive units indistinctly.
- A driving drum, in two halves, where the manganese steel driving star is integrated.
- A false shaft with a diameter of 100mm, mounted on a pendulum bearing, located on the opposite side of the reducer.
- A chain deflector.
- Gearbox: angular input and three gear trains, the first being bevel and the two remaining cylindrical with helical teeth.
- Hydraulic coupling: integrated inside a steel housing that serves as a link between the gearbox and the motor.
- Electric motor B-5, de 22 kW ó 45 kW



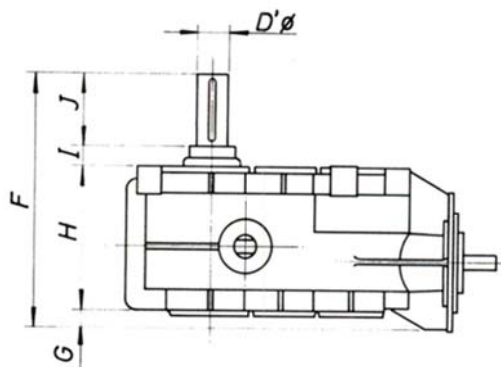
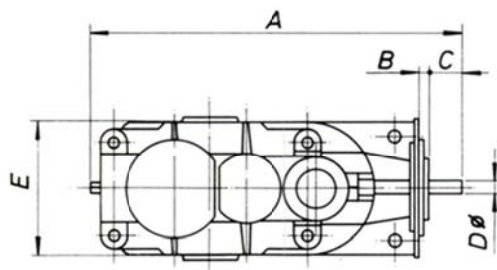
DESCRIPTION	REFERENCE	Power Kw	Weight Kg
MOTOR HEAD			
Driving head frame	01WL513113010900		470
Driving drum Z8 C18	01WL513113020000		150
False bearing	01WL513103030000		54
MOTOR GROUP			
Gearbox KSTIII-30	01WL913606000800		450
Gearbox KSTIII-55	01WL91380000000000		560
Hydraulic Coupling	SI		
Electric motor 22 kW	According to voltage	22	320
Electric motor 45 kW	According to voltage	45	390

Gearbox

The reduction is achieved by means of three gear trains. A helical bevel group and two helical cylindrical trains with lapped and ground tooth profiles respectively.

The casing, which is of the bipartite type, is symmetrical with respect to a horizontal median plane, built in cast steel and totally watertight. A hermetic seal is achieved on the input and output shafts by means of labyrinths and grease seals. The lubrication is done by immersion and splash in oil bath.

The efficiency of these reducers is 92%. They can be mounted on either side of the corresponding drive head.

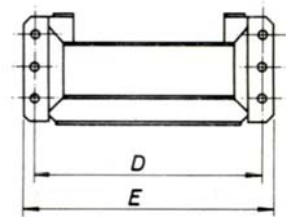
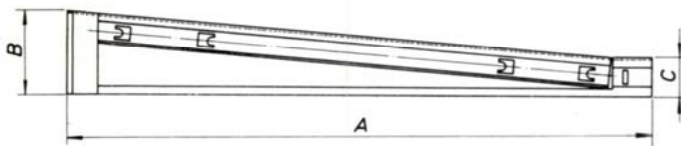
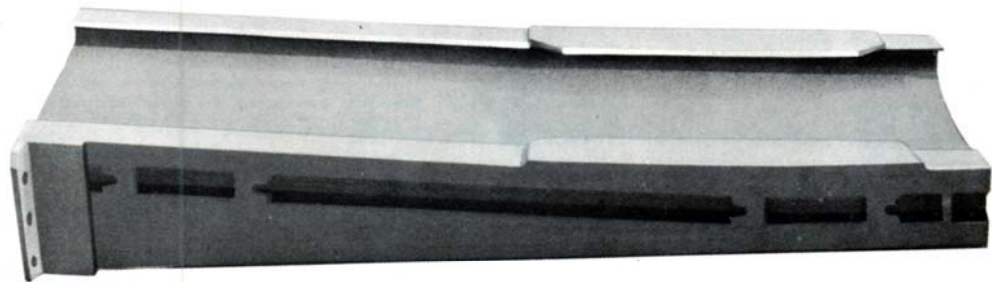


CONVEYOR	GEARBOX	A	B	C	D	D'	E	F	G	H	I	J	Peso Kg	
EKF-0	KSTIII-30	01WL913606000800	1000	51	79	50	95	480	678	15	449	54	160	450
	KSTIII-55	01WL913800000000	1100	35	110	55	100	468	689	125	465	66	170	560



Connection pan

To achieve coupling between the normal channels and the drive head. Manufactured with sigma profile and special treated steel bottom

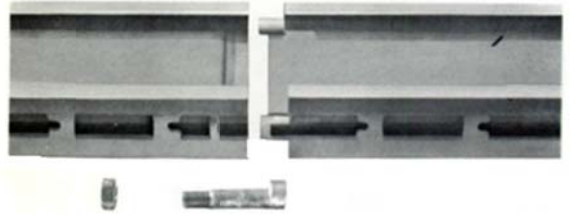
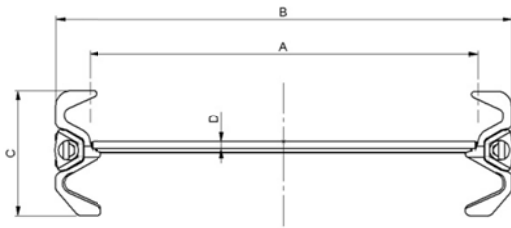


CONVEYOR	REFERENCE	A	B	C	D	E	Peso Kg
EKF-0	01WL513304010000CC	1.490	278	170	510	566	140



Pans

They are made of steel treated to avoid wear. Manufactured with special sigma profile and bottom plate with stamped overlap. The screws to join the channels are included. The union between channels is made as shown in the figure.



CONVEYOR	REFERENCE	A	B	C mm	D	E	Peso Kg
EKF-0	01TM000330100100		444	170	10	1500	140
	01TM000330100200		444	170	15	1500	165

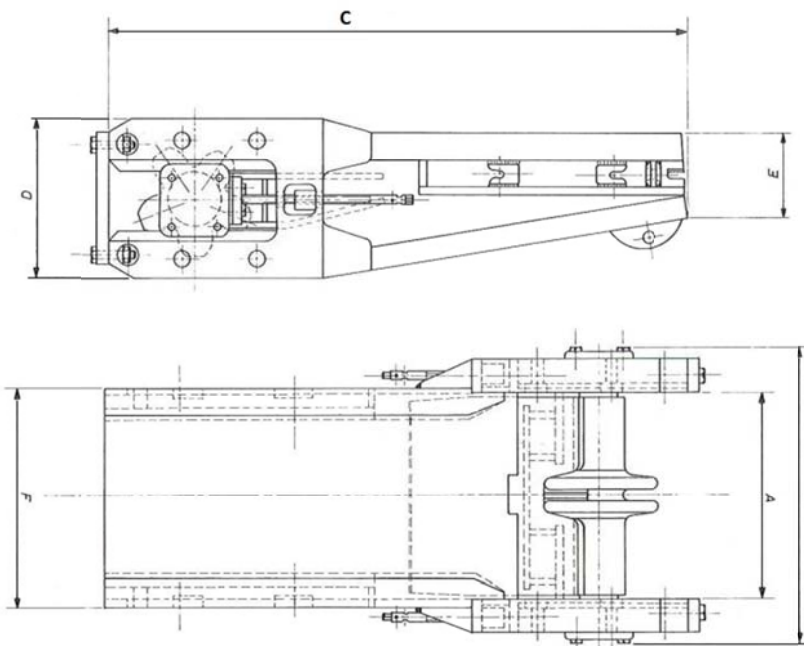


Forwarding station

Built in sigma profile, they form a very solid set, very resistant to collapses.

The return drum, with its star in the center to guide the chain, slides on side guides of the chassis, driven by a spindle system, in order to tighten the chain properly.

The mentioned tensioning system can be replaced by a hydraulic device.



CONVEYOR	REFERENCE	A	B	C	D	E	F	Peso Kg
EKF-0	01TM000301500100	420	600	1190	320	170	444	341



Chain

The chain is made of special steel according to DIN 22252.

Depending on the customer's needs and the application to be carried out, the conveyor chain is supplied in sections of different length.

As a standard application, we supply assembled sections of 6,114m (95 links) in length, with 7 scrapers bars and one false link.

