

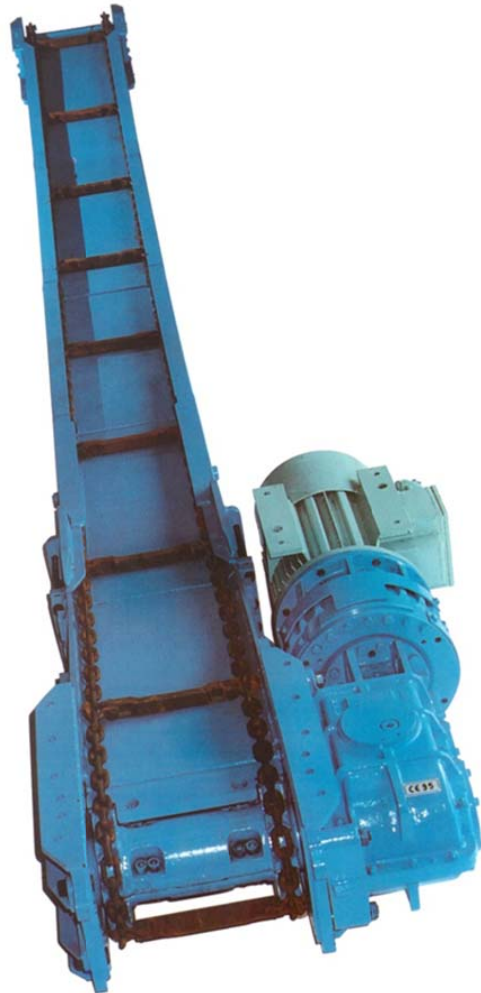


MACKINA - WESTFALIA



Product description

DOUBLE SIDE ARMORED CHAIN CONVEYOR MIv-500





INDEX

1.	GENERAL	2
2.	COMPONENTS	2
2.1.	Drive Head	2
2.1.1.	Gearbox	4
2.2.	Connection channel	5
2.3.	Pans	6
2.4.	Forwarding station	7
2.5.	Enhancement plate	8
2.6.	Chain.....	9



1. GENERAL

The Mlv-500 conveyor is specially designed for mechanized layer operations with brush or shearer.

The profiles, of great robustness, are with ends to the manganese and this allows to support the weight and the script of the machines of starting.

They are also used as transport equipment with abrasive materials.

Its most widespread application is in the exploitation of pits up to 200 m long with a maximum capacity of 350 t/h. It can be installed with one or two drive heads with a maximum power per head of 110 kW, using 45, 55 or 90 kW engines.

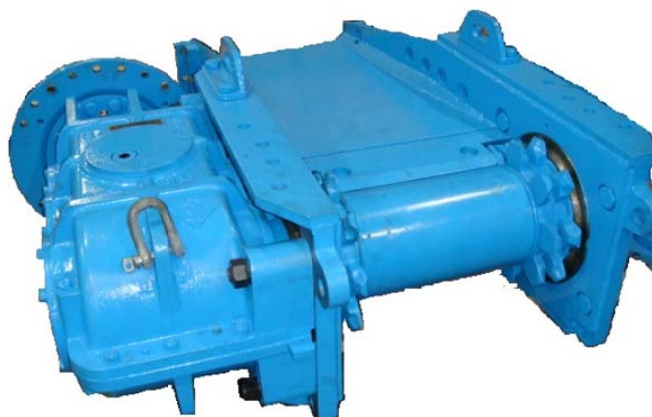
Maximum length.....	200 m
Capacity	350 t/h
Maximum Power	2x110kW
Chain Type.....	18 x 64
Transport speed 50 Hz.....	0.65 m/s
Pan weight Mlv 500.....	225 Kg

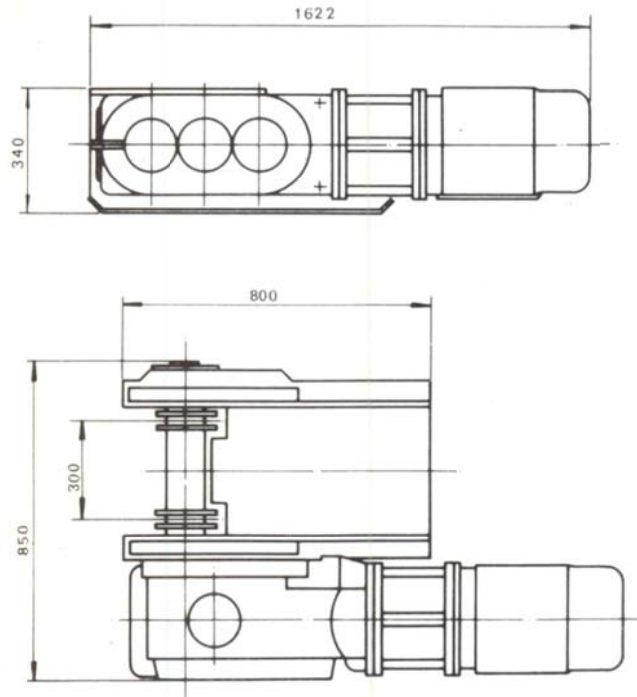
2. COMPONENTS

2.1. Drive Head

Composed by:

- Chassis: Solidly built steel frame with seats on both sides to mount the drive units indistinctly.
- A driving drum, Z-8, C-18
- A false shaft, mounted on a spherical bearing, located on the opposite side of the gearbox.
- Two chain deflectors.
- Gearbox: Speed reducer: angular input and three gear trains.
- Hydraulic coupling: integrated inside a steel housing that serves as a link between the gearbox and the motor.
- Electric motor type B-5, with power 45 kW, 55 kW o 90 kW.





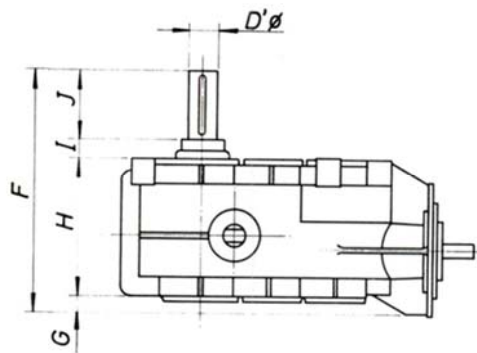
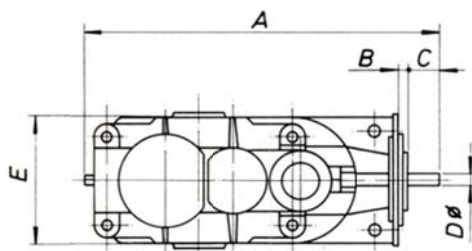
DENOMINACION	MODELO REFERENCIA	Potencia Kw	Velocidad m/s	Peso Kg
DRIVE HEAD				
Driving head frame	01WL511125020000			610
Driving drum Z8 C18 eje 100Ø	01WL511103010000			165
Driving drum Z8 C18 eje 120Ø	01WL511105010000			165
False bearing for shaft 100Ø	01WL511103020000			55
False bearing for shaft 120Ø	01WL511105020900			56
False bearing hollow grooved shaft	01WL511125040000			144
DRIVE LINE				
Gearbox KSTIII-55	01WL913800000000			560
Gearbox KSTIII-58	01WL914003000900			763
Gearbox K-27	01WL914410000000			980
Hydraulic coupler	Yes			
Flameproof electric motor 45 kW ATEX	According to voltage			
Flameproof electric motor 55 kW ATEX	According to voltage			
Flameproof electric motor 90 kW ATEX	According to voltage			

2.1.1. Gearbox

The reduction is achieved by means of three gear trains. A conical-helical group and two cylindrical-helical trains with lapped and ground tooth profiles respectively. The two-part housing is symmetrical in relation to a half horizontal plane, made of cast steel and totally watertight. A hermetic seal is achieved on the input and output shafts by means of labyrinths and grease seals.

Lubrication is done by immersion and bubbling in an oil bath. The efficiency of these reducers is 92%. Can be mounted on either side of the corresponding drive head.

Depending on the capacity and speed requirements, 3 different types of reducers can be mounted, each with different types of reduction to fully adapt to the customer's requirements

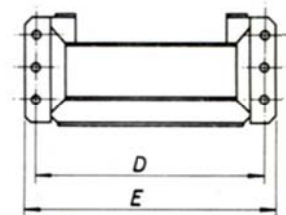
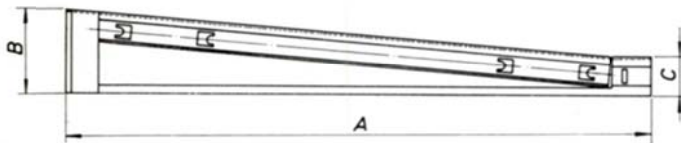


TRANSPORTADOR	REDUCTOR	A	B	C	D	D'	E	F	G	H	I	J	Peso Kg	
		mm												
Miv 500	KSTIII-55	01WL913800000000	1100	35	110	55	100	468	689	125	465	66	170	560
	KSTIII-58	01WL914003000900	1188	30	110	55	120	500	750	77	413	66	170	760
	K-27	01WL914410000000	1404	14	161	65	129	610	776	145	415	77	139	980



2.2. Connection channel

Connection between the normal pans and the drive head. Manufactured with sigma profile and special treated steel bottom



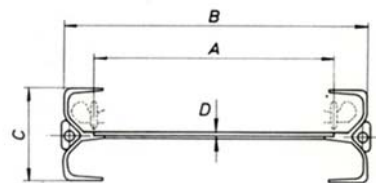
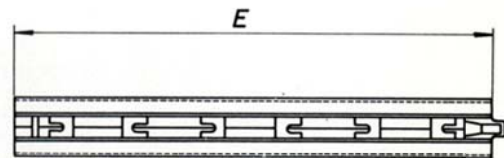
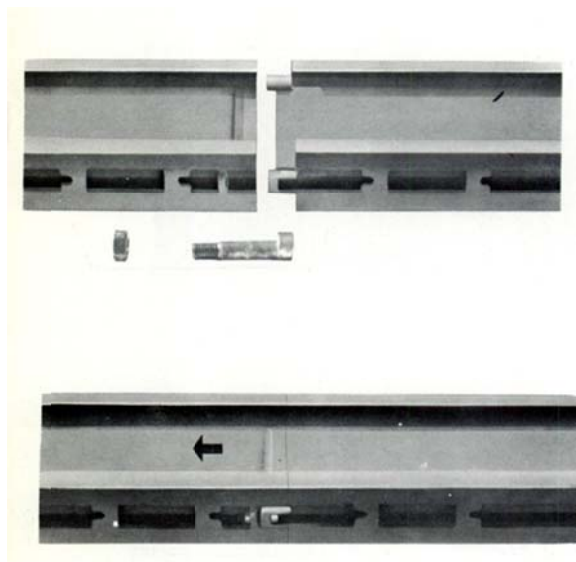
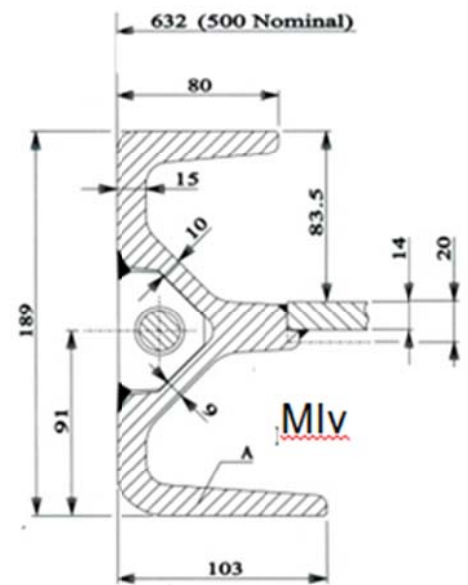
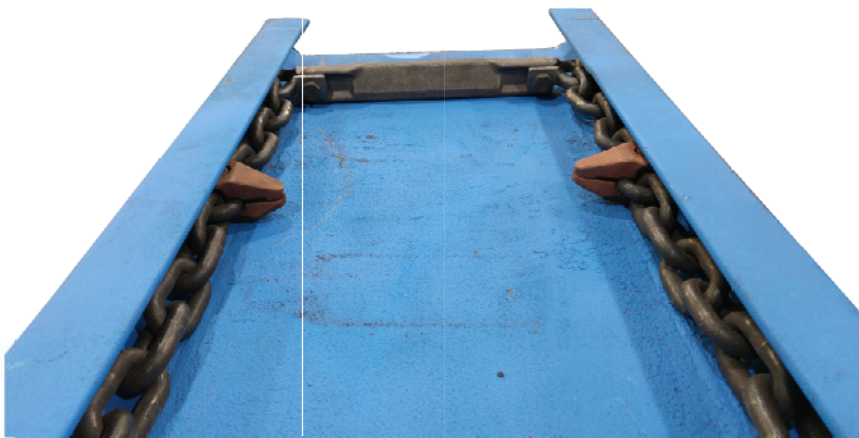
TRANSPORTADOR	REFERENCIA	A	B	C	D	E	Peso
Miv-500	01WL511370050000	1490	290	190	632	764	257



2.3. Pans

Steel channels treated to prevent wear. Manufactured with special sigma profile and stamped overlapping bottom plate. The connection screws between channels are included. The connection between channels is made as shown in the figure

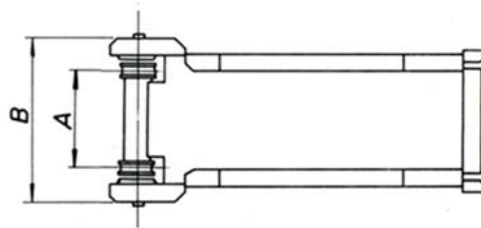
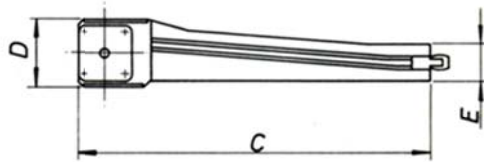
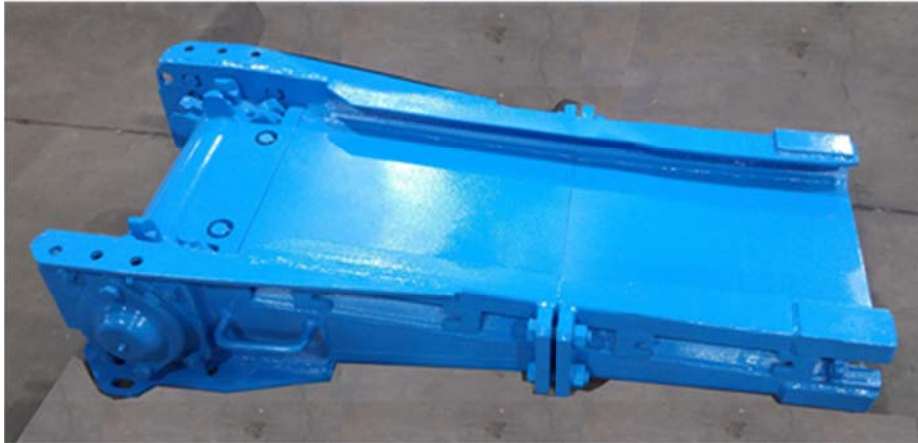
Standard length 1.500mm.



TRANSPORTADO R	REFERENCIA	A	B	C	D	E	Peso Kg
		mm					
Mlv-500	01WL511511478000660	500	632	190	115-20	1500	225

2.4. Forwarding station

Built in sigma profile, they form a solid set, very resistant to collapses. Normally the drum is star-shaped to avoid blocking by accumulation of fines, although it can also be grooved. The bearings on which the drum is mounted are amply dimensioned and their housing is watertight..

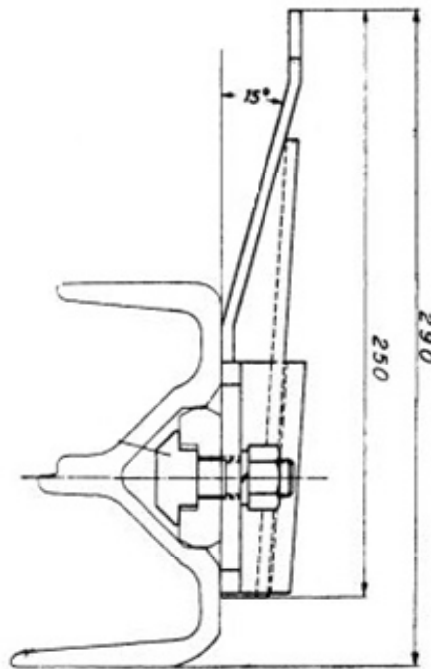


TRANSPORTADOR	REFERENCIA	A	B	C mm	D	E	Peso Kg
Miv-500	01WL51123600090003	500	760	2230	370	190	622



2.5. Enhancement plate

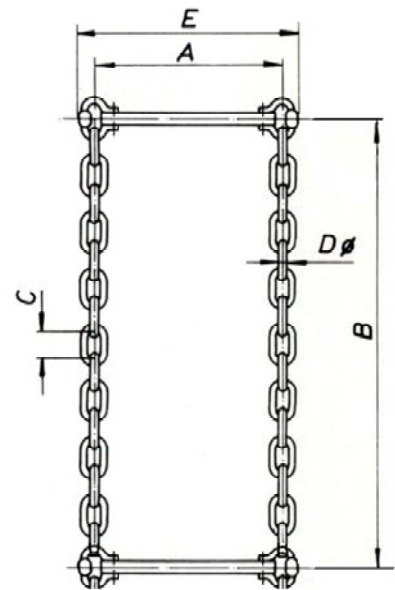
Designed to increase the section of the channel by facilitating loading and increasing the transport capacity. Allows to customize them according to the needs of use.



2.6. Chain

The chain is made of special steel according to DIN 22252. The scraper bars and connecting links are made of stamped steel, and the screws are made of treated special steel. The connecting links, bolts and chain are designed for the same breaking load.

It is supplied as standard with 5.12 m. long chain assembled with its corresponding 15-link chain sections, scraper bars and false links.



MODELO	A mm	B mm	C mm	D mm	E mm	Carga de Rotura KN	Peso Kg	Denominación	Referencia
Miv-500	500	1024	64	18	344	410	109	Chain Section 18X64 15E DIN 22.252-2	04950471800640015
								Scraper bar	01WL511606010010
								Connecting link	01WL21417227
								Bolt 20X75 8.8	0495059200075



MACKINA-WESTFALIA, S.A.

Carretera M-300 Km.29,5 28802 Alcalá de Henares MADRID ESPAÑA
Tel. + 34 91 889 44 12 Fax. + 34 91 883 21 74
Email. mackwest@mackina-westfalia.com
Web www.mackina-westfalia.com

